

Residence in Cambridge

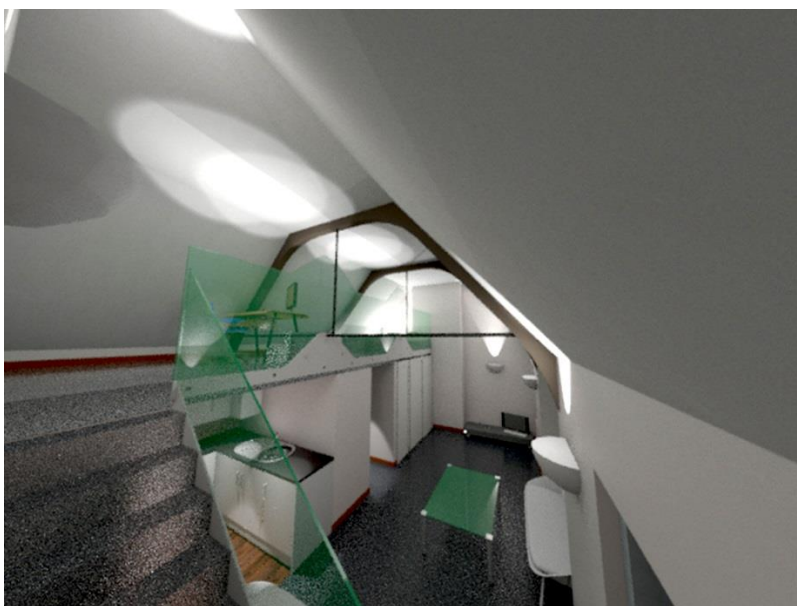


BEFORE

My client purchased a small flat with a vaulted roof space. A Mezzanine floor was installed to create an office and bedroom above with bathroom and kitchen flanking an entrance hall under the mezzanine.

Living space to the window side to still enjoy the double height, giving a feeling of space and all of the natural light.

This living space for a young person in an historic building created generous spaces to their best advantage, where little had existed. Glass balustrading enabled the view through the space to be uninterrupted while also retaining period features successfully juxtaposed with modern materials.



AFTER